



Commanding Leader

Calendar of Events

* Designates CVC Event

July 8th, 2023

Saturday @ 9am-3pm

Street Dreams Cruisers 8th Annual Car and Truck Show

Strosnider Chevrolet

5200 Oaklawn Boulevard

Hopewell, VA 23860

Registration: \$15.00, Day of Show \$20.00

\$10.00 Display only

Pre-register at www.streetdreamscruisers.net.

INFO: Glenn Harris (804) 317-0025

Donald Lee (804) 339-5629

Tyrone Flowers (804) 894-5231

July 29th, 2023

Saturday @ 10:00am - 4:00pm

Classic Car, Truck and Bike Show

Shady Grove Baptist Church

3384 Oakland Church Rd

Gum Spring, VA 23065

FREE ADMISSION Come out and enjoy music, fish fry, yard sale and lots beautiful rides on display. No registration to show your classic vehicle. All are invited.

INFO: Agonza Hayden (804) 291-6737

Jerry Mealy (804) 241-5735

August 19th, 2023

Saturday @ 12:00pm - 5:00pm

Shine'em & Show'em Car, Truck and Bike Show

Sponsored by McKenney Cruisers

Curtis Field

19306 Manson Church Rd

McKenney, VA 23872

Rain date is Saturday September 9, 2023.

Registration: 12:00pm - 2:00pm, \$25.00

Non-Judged Cars and Spectator fee \$20.00. Full meal included (all-you-can-eat as long as it lasts). Children 10 and under free.

INFO: Connie (804) 720-7787 or Tony (804) 691-1104

September 9th, 2023

International Drive your Studebaker Day



September 9th, 2023

Saturday @ 10:00am - 3:00pm

16th Annual HBC Car Truck & Motorcycle Show

Hyles Baptist Church

7220 Courthouse Rd

Chesterfield, VA 23832

Registration: \$15.00 postmarked by September 4th,

\$20.00 day of show

Rain date September 16th.

INFO: James Leavy (804) 839-6084

EMAIL: jamesleavy@msn.com

WEBSITE: www.hbccarshow.com

For more events in Central Virginia,
go to the Car Club Council of Central Virginia
website:

<http://carclubcouncil.com/>

CVC/SDC Meet ~ May 20th, 2023



Marty's Grill in Mechanicsville, Virginia, was the site of the Central Virginia Chapter's May meet. The meet was originally scheduled for Sunday, May 14th, but, OOPS, that was Mother's Day, bad choice! Second, Marty's closes at 2:00pm on Sundays!

We had Betty and Linwood Crawford arrive in their 1957 Silver Hawk and Jeanette Smith and Jim Jett in their 1962 GT Hawk. Attending sans-Studebaker were Chris Mendl and Martin Pajki.

The weather was pleasant so the group dined on the patio where some old Studebaker war stories were shared.



Betty & Linwood Crawford's
1957 Silver Hawk



Jeanette Smith & Jim Jett's
1962 GT Hawk

Next Meet

July 16th, 2023
Sunday @ 2:00pm

Not the 4th of July Picnic

HOST: Jeanette Smith & Jim Jett
221 Fairway Dr
Louisa, VA 23093-6522
(804) 920-2129 (C)



Join Jeanette and Jim at their home in Louisa, Virginia, for a July picnic, just not the 4th. If the weather is not cooperative, we will move inside.

It will be a catered event by Kickin' Ash BBQ of Powhatan, Virginia.

Please RSVP by phone or email by July 10th if you think you may attend so a head count can be given to the caterers.

Jim Jett: (804) 920-2129(c)

EMAIL: jsjett@centralvirginiachapter.org

Jeanette Smith: (410) 991-5000(c)

See you at the picnic!

For personal driving directions using MapQuest, click [HERE](#).



September Meet

September 23rd, 2023
Saturday @ 2:00pm

County Seat Restaurant & Gathering Place



3883 Old Buckingham Rd
Powhatan VA 23139
(804) 598-5000

County Seat Restaurant in the heart of Powhatan Village will be the location of the Central Virginia Chapter September meet.

The meet is later in the month than usual. This is to not interfere with any plans to attend the SDC International Meet in Manitowoc, Wisconsin.

See you Saturday!

Jim

(804) 920-2129 (C)

Click [HERE](#) to view their menu.

Click [HERE](#) for personalized directions.





59th Studebaker Drivers Club International Meet Manitowoc, Wisconsin September 12-16, 2023



Welcome to Manitowoc, Wisconsin 2023

59th Annual Studebaker Drivers Club International Meet

September 12-16, 2023

*Presented by
The Wisconsin Region
Studebaker Drivers Club*

MANITOWOC COUNTY FAIRGROUNDS



Meet Contacts

Meet Registration

Cornerstone Registration, Ltd.
PO Box 1715
Maple Grove, MN 55311-6715
reg@cornerstonereg.com

We cannot accept registrations over the phone. Please mail in a registration form or register on-line.

International Meet Chairperson

Jane Stinson
jestinson@aol.com

Click [HERE](#) to go to the SDC Meet website.



✧ *THE NEW "YORK" IN NEW YORK* ✧

Studebakers at Dunkirk

Swap Meet + Car Corral



2023



Friday
September 22
8:00 am - 5:00

&

Saturday
September 23
8:00 am - 2:00

CHAUTAUQUA COUNTY FAIRGROUNDS

1089 Central Ave, Dunkirk N.Y.

EASY ACCESS

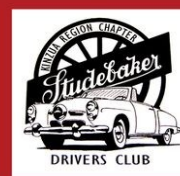
FROM EXIT 59

INTERSTATE 90

RAIN OR SHINE

FREE PARKING

Sponsored by the Kinzua Region
Chapter Studebaker Drivers Club



Attention: Vendors space available indoors and outdoors

Call: 814-779-5553 Madd_Doodler@Yahoo.com

Studebaker GroupWorks

Welcome to our new initiative, Studebaker GroupWorks. This new tool increases communication and fellowship among SDC members, allowing news and updates throughout the SDC to be shared and delivered promptly.

The Studebaker GroupWorks communications tool provides the club with efficient and effective real-time access to the participating SDC membership, including national and international Studebaker Drivers Club and affiliated Chapter programs, current news, and event information.

A1 Studebaker Drivers Club is the title of the main group of members in GroupWorks, and invitations to join are sent from there first.

Meet Your GroupWorks Administrative Staff:

- Denny Foust studeguy54@gmail.com – Denny is your Studebaker Drivers Club (SDC) President and a member of the SDC since 1967.
- Cynthia Sale cynthiasale525@gmail.com – Cynthia is from the Iowa Hawkeye Chapter and has been a SDC member since 2002
- Larry Michael lmichael49@comcast.net – Larry is the Regional Manager of the Pennsylvania Region and has been an SDC member since 1969

If you have not received an invitation and would like to join, send an email to StudebakerDriversClub@gmail.com to request an invitation. Include your name and email address, and you will receive an invitation from the GroupWorks program. Please allow a few business days to receive your invitation, as your admins may be at Studebaker events.



—SECOND SATURDAY IN SEPTEMBER—

International Drive Your Studebaker Day is an official event of the Studebaker Drivers Club (SDC). It is held on the 2nd Saturday of September.

Mark your calendar now to join Studebaker drivers around the world on the road and show off your Studebaker car, truck or horse-drawn vehicle! Participation is easy! Just drive your Studebaker on the second Saturday in September and tell people why you love Studebakers!

- Go anywhere as long as you drive your Studebaker
- Organize or participate in a chapter event
- Take a cruise around the town or through the countryside
- For more information, contact the IDYSD Chair, Bob Shaw at bobshawrush@gmail.com

Commanding Leader

*Quarterly publication of the
Central Virginia Chapter
Studebaker Drivers Club
Richmond, Virginia*

Jim Jett, Editor

jsjett@centralvirginiachapter.org

Officers:

Jim Jett, President

Lee Harrison, Vice President

George Marshall, Treasurer

Studebaker Tech Tip

Generator testing – Do you have a generator and you don't know if it is good or bad? Take a jumper wire and ground the field to the generator body. Hook the negative side of a battery to the field. Hook the positive side of the battery to the armature. If the generator turns, it's good. If it doesn't turn, something is wrong with it. (Thanks to the late Ron Smith, Washington Dictator, Tacoma Area)

Switch tail light switches – Studebakers have always used hydraulic stop light switches. When you step on the brake pedal, the fluid pressure (60-120 psi) closes the contacts on the switch. With pendulum-type brake pedals, it became convenient to mount a mechanical stop light switch under the dash, actuated by the brake pedal. Hydraulic switches mounted under the hood are less than reliable, due to the presence of oil and moisture. It is said that silicone brake fluid can permeate to the switch diaphragm and contaminate the switch contacts.

If you own a '61-66 Lark, Avanti or '63-'64 Champ pickup, you can convert to a mechanical stop light switch. Get a Borg-Warner S-237 or Standard Ignition SLS 66. Make sure the brand you get comes with two stamped steel nuts for mounting the switch. The Motorcraft equivalent I checked didn't. A normally-closed switch (the plunger is spring-loaded to the closed position) is installed above the brake pedal so that the upper edge of the arm can depress the plunger and open the contacts when the brake is in its normal position.

There is a handy hole in the pedal mounting bracket for the pedal stop. Fabricate a simple sheet-metal mounting bracket that attaches under the pedal stop with a 1/2" diameter hole for the switch. There is a long range of adjustment on the switch so you can get some pre-load to ensure the switch is normally off with the switch mounted. Then you just have to extend your wires to the switch and you're done! (from Jerry Blount, Northwest Newsletter, Portland, Oregon)

Painting Smaller Parts – When you need to paint smaller parts (door jambs, etc.) and you don't have a compressor, you can use the Preval Spray Gun Power Unit (about \$5). This system is a gas charged power unit that attaches to a six ounce paint reservoir. Standard automotive enamels and lacquers can be used. This makes it easier.

Similar to traditional spray methods, the paint must be reduced with the appropriate enamel reducer or paint thinner (available from your paint supplier) in the proper proportions. Your automotive paint supplier can also supply a viscosity drip cup which helps you determine when the paint is mixed properly. Remember to use low tack masking tape – it is more expensive but well worth it in the long run. Remove the tape when the paint has set up – about 1-2 hours. (from Stude Road Dust, North Puget Sound)

Did you know? The fabulous 1950-51 bullet nose Studebakers were probably the most famous Studebaker design of all time and arguably the one most well-remembered by the general public. For 1950 Studebaker built 343,164 of them (its best year), with another 268,565 for 1951. Studebaker advertised the bullet nose as the "Next Look" for 1950 and it was different indeed from everything else on the road. All of the 1950 models were powered by in-line 6 cylinder engines with the Champions having the smaller Champion six and the Commanders and Land Cruisers having the larger Commander six.

Then and now, bullet nose Studebakers were seen everywhere. Fozzy Bear drove one in "The Muppet Movie". Avon produced a men's cologne bottle in the image of one. The Studebaker's Night Club feathers one on its menus and matchbooks. And considering that Studebaker only built a total of maybe 4.5 million cars in its entire 64 years of automobile manufacturing, roughly 1 out of 8 Studebakers ever built were bullet nose models. Millions of people rode in one at one time or another. (Thanks to Al Germano, Washington Dictator, Tacoma area)



CVC Members Out~N~About

The Richmond Chapter of the Antique Automobile Club of America held their annual meet June 10th, 2023. The location was St Joesph's Villa in Richmond, Virginia.

CVC members Matt Steffen and Jeanette Smith and Jim Jett had their Studebakers on display. Seen at the show were Linwood Melton, Darryl Terretta, Charlie Hamilton and George Field.

The event was well attended with many interesting vehicles present. Several examples of the Packard Marque were on the show field.



1947 Packard Custom Super Clipper LWB Sedan



*Matt Steffen 's
1957 Silver Hawk*



1956 Packard Caribbean Convertible



*Jeanette Smith & Jim Jett's
1962 GT Hawk*



1930 Packard 745 Roadster

CVC Members Out~N~About

Packard's at the Richmond AACA show continued.



1932 Packard 902 Coupe Roadster



1935 Packard 1205 Convertible Sedan



1934 Packard 1101 Coupe



1953 Packard 1205 Caribbean Convertible

The Old School Hot Rodders of Virginia Spring Show in Sutherland, Virginia, was held on May 6th, 2023. Buzz Horne attended the show displaying his 1957 Studebaker Golden Hawk.



Find us on:
facebook®

CVC Members Out~N~About

Mt Olivet Baptist Church located at 17520 Jefferson Highway, Montpelier, Virginia, held their annual car show on June 3rd, 2023. Attending with their 1962 Studebaker GT Hawk were Jeanette Smith and Jim Jett.

The GT Hawk took the award for "Best Abandoned Brand".

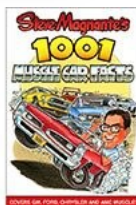


Central Virginia Chapter welcomes new member Matt Steffen.

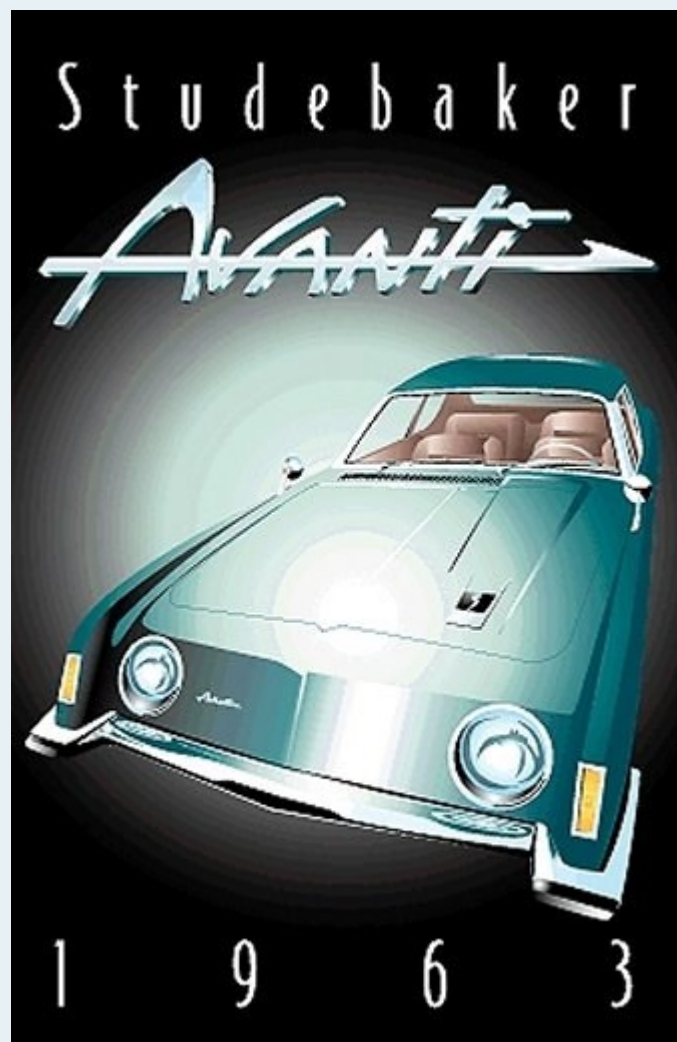
Matt lives in Glen Allen, Virginia, and drives a 1957 Studebaker Silver Hawk.

Interesting Studebaker Muscle Car Facts

by Muscle Car DiY



Fact 961: Studebaker installed 1-inch shims between the frame and body of every Avanti equipped with the R3 engine option (nine built). The extra height was needed to provide clearance between the large cast-aluminum carburetor pressure box and underside of the hood. Unfortunately, the Avanti's unique hood bulge (described as a "speed ramp" by Loewy's design team) was asymmetrically positioned (ahead of the driver) so it couldn't be refigured for pressure box clearance (which was centered directly over the carburetor). The added inch of body height raised the vehicle center of gravity, but budget-conscious Studebaker engineers chose this route rather than endure the cost and aesthetic burdens of adding a hood blister.



A GUARD IS AGAIN ON DUTY AT STUDEBAKER

By, and thanks to Dan Kuhl

Studebaker was flush with cash in 1928. The as stated in numerous previous articles, company had just come out with the Erskine, a brand new "World Car", purchased the Pierce Arrow line of cars, opened a new car proving ground just outside of South Bend, and with new building construction completed a new guard house at Gate One into the factory complex. The auto business was looking good for Albert Erskine, President of Studebaker.

As part of this beehive frenzy of activity were two signature entrances to Studebaker complexes, the entrance to the Proving Ground with its beautiful Studebaker wheel adornments on top of the brick entrance fence posts and the brick guard house and gate at the entrance to the factory complex on Sample Street in South Bend.

The guard house served the factory from 1928 until just after the factory closed its doors on December 9, 1963. The melancholy photo taken of Gate One on that last day has some interesting aspects: the flag at half-mast for John F. Kennedy who was assassinated weeks before and the operating archaic running light in the grill of a Lark leaving the factory on that snowy winter day (see 1963 Photo).

The guard house was eventually torn down with the adjacent factory building in 2008. All 3,863 bricks and miscellaneous construction materials from the 1928 construction were placed in storage in another Studebaker building to await its fate. In the spring of 2022 the guard house was reconstructed at its new home in the 600 block of South Lafayette near Building 84. \$25,000 has been spent on the project with an additional \$30,000 needed for addition of the original gate to the guard house location.

During the 2022 SDC International Meet its Grand Opening was celebrated.



Studebaker workers exit Gate 1 on Sample Street, December 9, 1963



Studebaker Guard House before being disassembled and put in storage in 2008

In November of last year, the final touch was added, a guard standing in the door to the guard house. A donated mannequin dressed in a guard uniform is an impressive addition to the project. His name is "Earl" after Earl Smith, a dedicated project volunteer who passed away in the fall of 2022. It took only 60 years to get the guard house back into service at Studebaker.



Earl the Guard takes up duty in the rebuilt Guard House

A 1956 Studebaker-Packard Clay Concept Car and a Modeler's Memories

May 28, 2014

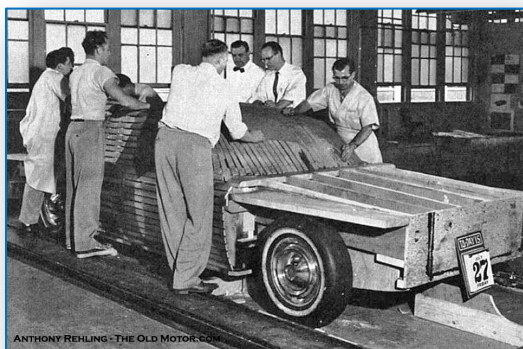
Source: <https://theoldmotor.com/?p=120715>



Anthony Rehling at far left is seen adding clay to the model

Anthony Rehling at age thirty went to work at the new styling section organized in 1953 at the Packard Motor Company. The studio was headed at the time by Bill Schmidt, who hired Dick Teague after he left the General Motors design studios where Rehling had also worked at the time. Packard soon after merged with Studebaker in 1954.

In August of 1956 Rehling and his co-workers went to work on this new Studebaker-Packard styling concept for a sports car that was slated to compete with the Thunderbird. These images of the process give one much more insight into of the modeling process than is normally seen. The first four photos show the form just starting to take shape with the application of clay to the wooden armature.

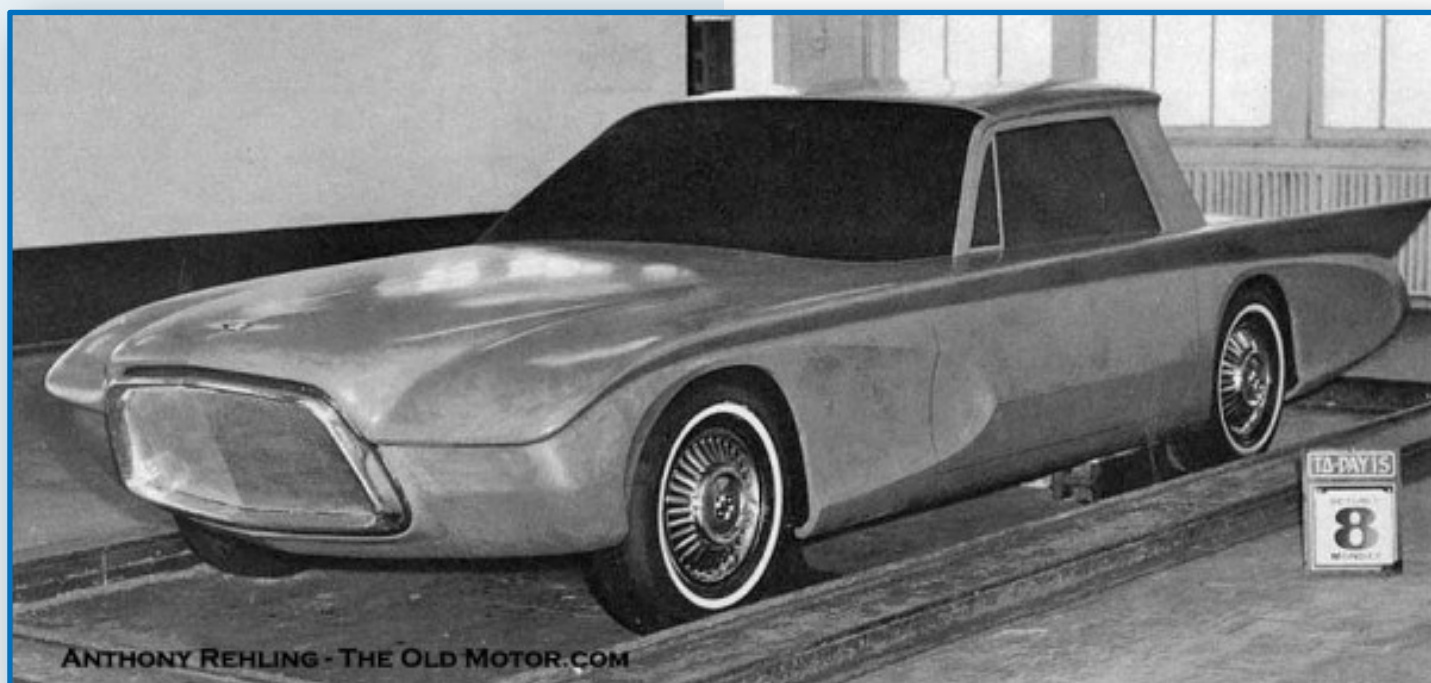
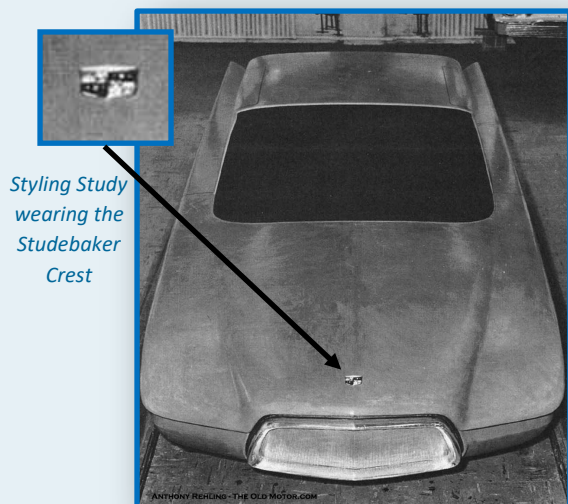


Continued next page

A 1956 Studebaker-Packard Clay Concept Car and a Modeler's Memories ~ continued

The last four photos above and below show the final shape of the quite modern-looking model trimmed with wheel covers and a grille. Rehling's recollections mention that this model ended up wearing a Studebaker badge, which leaves us with a couple of unanswered questions: Did this model make it any farther through the design process? Was it ever given a name?

The photos and information for this post came from Last Days In The (Packard) Bunker: A Clay Modeler's Memories via Deans Garage, where you can read the rest of Rehling's interesting story that ends with Packard closing. Can any of our readers tell us anything more about this uniquely-styled model?



Classified Ads

Approved Classified Ads are free to all CVC/SDC members and available to non-members for \$5 per ad. Ads will be on the website for 90 days and in one newsletter unless renewed.

For Sale:

ONE (1) New air filter for 289 R-2 V8, \$17.25.



TWO (2) Rebuilt 12-volt generators, \$125.00 each.



ONE (1) Rebuilt Stromberg Model WW 2 barrel carburetor, \$300.00



Contact Jim Jett, (804) 920-2129

EMAIL: jsjett@va.freei.net

Membership

You don't have to own a Studebaker to be a member of the Club. If you do, or are just interested in Studebaker automobiles, we would love to have you as a member. You can join and pay membership dues online or print and mail the membership application. Membership in the Studebaker Drivers Club is required to join the Central Virginia Chapter.

Link to join CVC/SDC:

<http://centralvirginiachapter.org/JoinCVC.html>

Link to join the Studebaker Drivers Club:

<http://www.studebakerdriversclub.com/join.asp>

Visit our website at www.centralvirginiachapter.org



AVANTI—Dramatic, Dynamic...and Docile

Avanti's promise of pleasure is clear from the moment you first see it.

Its distinctive aerodynamic wedge shape alone is an enticing invitation to an exciting new experience in road travel. For the Avanti is the unique product of precise engineering—immediately apparent from its quietly authoritative power and silky handling. Once inside this mag-

nificent machine, you are surrounded with a combination of luxury and safety features without equal in any other car.

No other U.S. car has a padded steel safety arch overhead to protect you and safety-cone door latches that cannot accidentally open...or a built-in Beauty Vanity. Nor caliper disc power brakes—unique in a U.S. car and safest known.

Avanti, moreover, seats four in ample roominess.

What other car in its performance class does! Avanti's promise of performance is ready to be kept at your bidding. Indeed, here is an automobile that is uniquely dramatic, dynamic and docile. It will bring you the ultimate in driving pleasure. It is a pleasure reserved to Avanti owners alone. See it at your Studebaker dealer's.

From the advanced thinking of  **Studebaker CORPORATION**

Photos and articles for Newsletter and Website

Do you have any photos of events you attended? Is there an upcoming event you would like to promote? Do you have any interesting information you would like to share?



If so, send them to the editor at

jsjett@centralvirginiachapter.org

CVC/SDC apparel available

Items displaying the Club logo are available to club members. The Polo Shirts are available in white, navy or black in men's and women's styles. T-shirts are available in white or black in men's and women's styles.

CVC/SDC apparel and other items can be ordered and paid for on the Club website, go to:

<http://centralvirginiachapter.org/MemberStore.html>





Central Virginia Chapter Studebaker Driver Club, Inc.



MEMBERSHIP APPLICATION

NAME: _____

SPOUSE/PARTNER: _____

ADDRESS: _____

CITY: _____ ST: _____ ZIP: _____

TELEPHONE: () - EMAIL: _____

Membership number in Studebaker Driver's Club, Inc. _____. (Found on your membership card).
This is a requirement for local membership.

Annual dues are \$15.00 per person/couple (Both husband and wife are voting members)

Checks should be made payable to **"Central Virginia Chapter SDC"**

Please list the model, year and series name of any Studebaker vehicles you own. (Ownership of a Studebaker is not a requirement for membership)

1) _____

2) _____

3) _____

Please mail with dues to:

George Marshall
Treasurer CVC/SDC
12302 Bailey Oak Pl
Midlothian, VA 23112-6895